

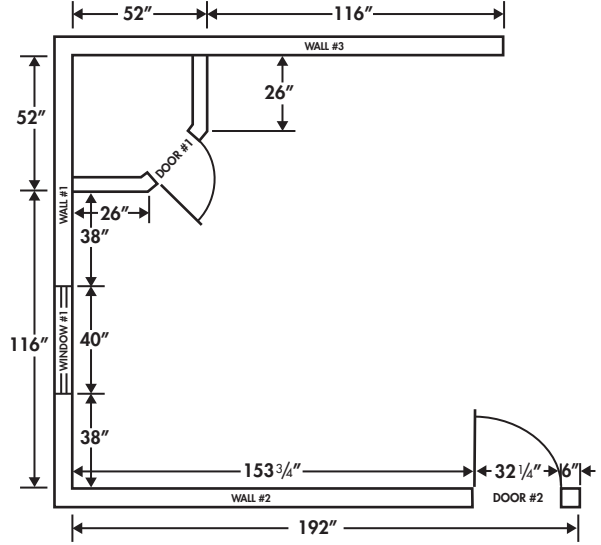
The following step-by-step instructions will make measuring for your new project a snap! All that's required is paper, a pencil, a tape measure and calculator. We've provided a handy grid on the reverse for you. Accuracy is the key to a successful project, so take your time and be sure to double check all measurements.

#1 - Measure Walls

Begin in any corner of the room with tape measure at waist height, and measure to an adjacent wall. Always measure in inches only, not feet and inches! Record your first measurement and continue around the room measuring all walls where cabinetry will be installed. Once completed, draw the floor plan and add your measurements like the example below step #3.

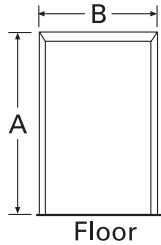
#2 - Openings (Doors/Windows)

Now, measure all doors, windows and wall openings. Any door trim, window trim or opening trim is considered part of the opening, and should be included in your measurement. Record your measurements (in inches) on the charts provided below for reference in the next step.



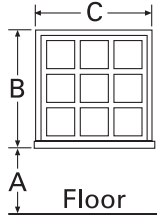
DOOR MEASUREMENTS

DOOR#	DIMENSION A	DIMENSION B
1		
2		
3		
4		



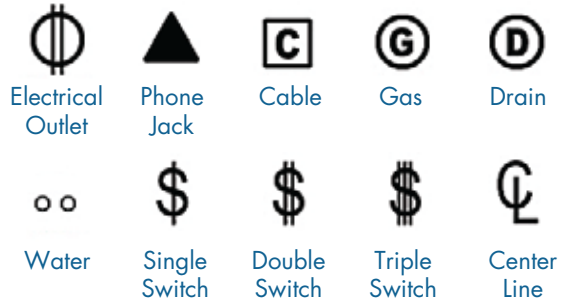
WINDOW MEASUREMENTS

WINDOW#	DIMENSION A	DIMENSION B	DIMENSION C
1			
2			
3			
4			



#4 - Wall Elevations

Draw an elevation of each wall and locate all openings. Be sure to include the ceiling height and show soffits (boxed build-down from ceiling), if you have them or plan on adding them. For easy identification, use the symbols shown below to locate water lines, drain lines, electrical outlets/switches, etc.



#3 - Note Openings on Floor Plan

The next step is to mark all openings on your floor plan. Note the dimension from the corner to outside edge of opening trim, mark on drawing. Add opening dimension and then, the measurement from outside edge of trim to adjacent wall. Repeat process for all openings. Identify all openings from the charts above and then label wall numbers for future elevation drawing reference. When placing doors on drawing, be sure to indicate which way the door opens.

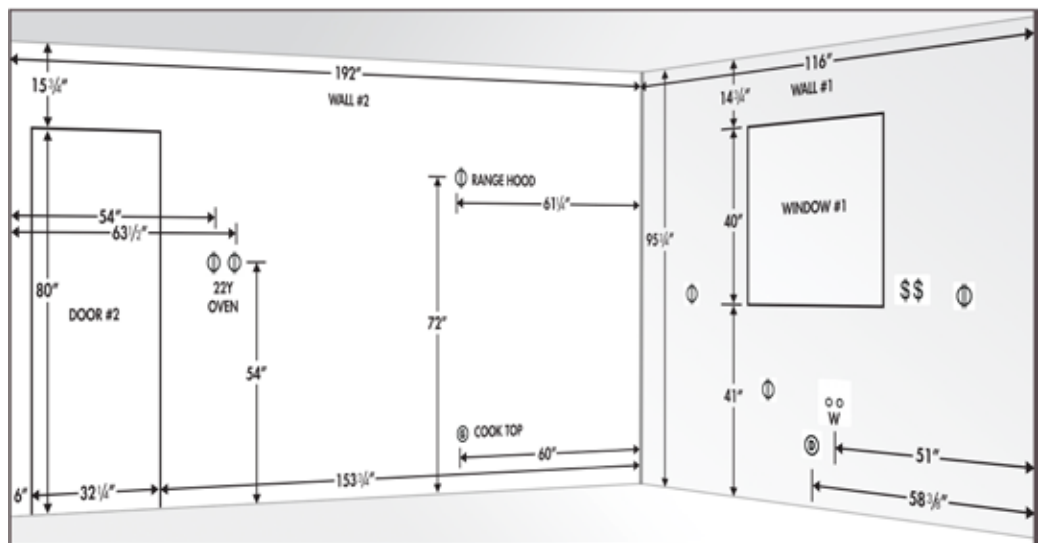
Enter the centerline location dimensions for any applicable utility services and finally, identify any wall areas that are not to receive cabinetry or any obstructions that may complicate design.

NOTE:

Please remember to indicate any special design features that you want to incorporate into your new room. These may include: lazy susan's, mullion doors, roll-out trays, soft-close drawers or doors, wine rack, etc. A space is provided on the reverse for you to describe them.

Sample Wall Elevations

Note - when drawing out your space on the opposite side, please sketch out each "Wall" individually with the appropriate heights and other elements that will need to be included in the design.



#5 - Appliance Dimensions

Please insert the overall dimensions of your existing appliances (or those you intend to purchase) and confirm the PCS cabinet style you are most interested in.

APPLIANCE	DIMENSIONS WxDxH (in.)		
RANGE	w:	d:	h:
WALL OVEN	w:	d:	h:
COOKTOP	w:	d:	h:
REFRIGERATOR	w:	d:	h:
DISHWASHER	w:	d:	h:
MICROWAVE	w:	d:	h:
OTHER:	w:	d:	h:

Cabinet Style: _____

SPECIAL DESIGN FEATURES & NOTES:

#6 - Contact Information

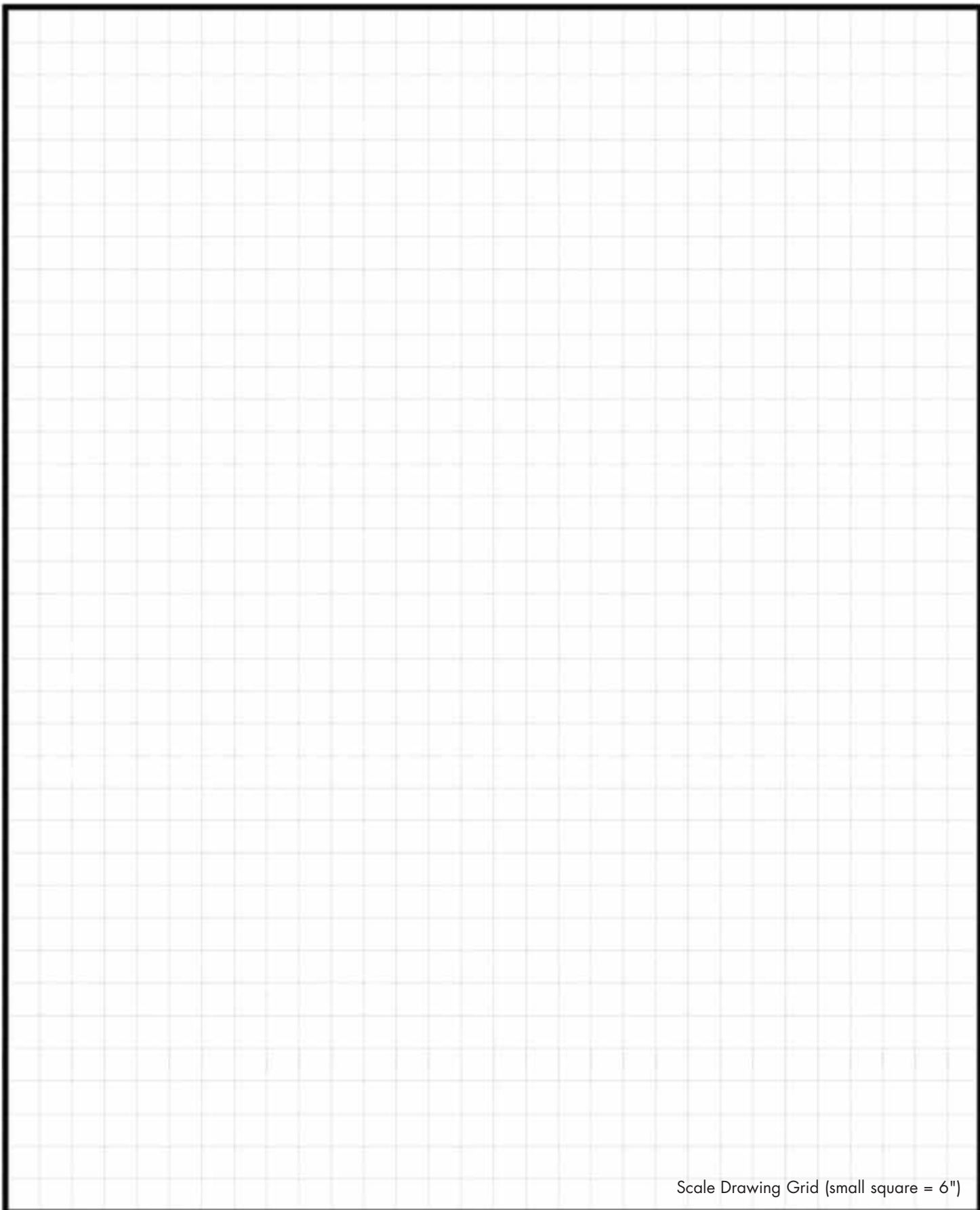
We need to know how to contact you in order to get started on your design. Please carefully fill out your information below.

Name: _____
 Address: _____

 Phone: _____
 E-Mail: _____
 Best Time to Call: _____

Almost finished! Please take your drawings into your kitchen designer to discuss and finalize your design.

Your kitchen designer will get you on your way to your new kitchen



Scale Drawing Grid (small square = 6")